

Who we work with

SEFC comprises of a very qualified team from various academic and cultural backgrounds. As well our research is headed by the following principal investigators:

Dr. Antoinette Schoar

Professor of Entrepreneurial Finance, MIT Sloan School of Management

Dr. Schoar's is an expert in corporate finance, entrepreneurship, and organizational economics. She researches venture capital, entrepreneurial finance, corporate diversification, and governance, and capital budgeting decisions in firms. Dr. Schoar is a co-founder and executive director of Ideas42, a Harvard based think-tank, as well as being the director of the SME Initiative at Innovations for Poverty Action.

Dr. Rajkamal Iyer

Assistant Professor of Finance, MIT Sloan School of Management

Dr. Iyer's research expertise is in the area of banking and contract theory. In particular, he has done research on understanding the role of interbank markets in the provision of liquidity. His recent research projects include examining the factors that mitigate depositors' incentive to run on banks and how market participants overcome friction in contracting. Dr. Iyer is also a senior research associate at Ideas42.

Dr. Mudit Kapoor

Assistant Professor of Economics & Public Policy, Indian School of Business

Dr. Kapoor's primary research interests are in the areas of applied econometrics, applied microeconomics as well as in industrial organization, development, labor, and finance. He is also a consultant for the World Bank on topics such as welfare impacts of policy intervention on poor urban households in developing countries.

Dr. Viswanath Pingali

Assistant Professor of Economics, IFMR Business School

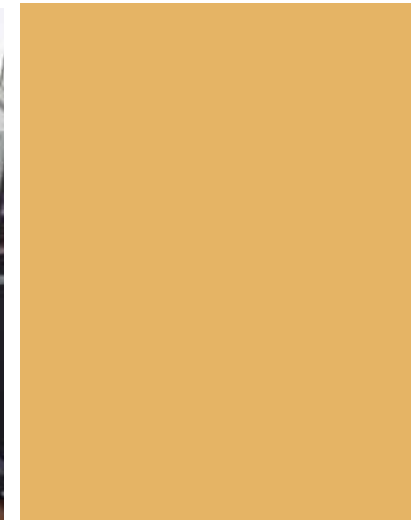
Dr. Pingali's research interests include industrial organization, regulatory economics and applied econometrics. In particular, his research focuses on how firms compete and price their products in regulatory, as well as free market regimes. He is currently working on characterizing the effect of competition in the microfinance industry. His other research interests include intellectual property and welfare issues relating to the pharmaceutical sector.

Get involved

At SEFC, we focus on action-oriented research that uses field investigation, data collection and scientific research methods. We test our ideas by partnering with financial institutions, NGOs & businesses like ICICI bank, TATA Capital, All India Chit Fund Association. If you would like to learn more about us or collaborate in one of our research activities, please contact us at sefc@ifmr.ac.in or at the address below.

Small Enterprise Finance Centre

IFMR, A1, 10th Floor, IITM Research Park, Kanagam Road, Taramani,
Chennai - 600113, Tamil Nadu, India. www.ifmr.ac.in/sefc | sefc@ifmr.ac.in



SMALL ENTERPRISE FINANCE CENTRE
**Supporting SMEs through
innovative research**



What is SEFC

SEFC is a laboratory combining applied research in economics, finance, psychology and other behavioral sciences with a focus on persistent problems faced by SMEs in India. We seek to study how financial markets and private market forces can foster the growth of SMEs as well as to understand the role that SMEs play in the alleviation of poverty.

What we do

We work at the intersection of action and research to provide insights using innovative economics and finance research with a focus on scalable solutions in the SME sphere. We rigorously test our ideas by partnering with financial institutions, NGOs, and businesses in India that service the SME sector.



Our research

At SEFC, we conduct research that helps develop insights to improve SMEs' access to financial services, and to resolve existing bottlenecks in the financial system such as labor turnover, market inefficiency, and poor infrastructure.

Some of the prominent research questions we address include:

- how can banks build better credit scores for SMEs or improve the trust relationship with the clients?
- how do individuals choose between employment and entrepreneurship?
- how do SMEs solve contracting problems and develop trust relationships?
- how can the chit fund model be extended to increase financial inclusion of low-income households and small businesses?

We use different research methodologies ranging from randomized control trials to audit studies to understand the above mentioned research questions.

Why we focus on SMEs

SMEs are recognized as engines of innovation, employment and development. Despite attention from policymakers and the private sector, SMEs face challenges such as: limited access to finance, high cost of funds, working capital shortages, and lack of training among bankers.

SEFC's research complements the efforts of the government, NGOs and market participants to create an environment where SMEs can thrive and achieve scale.



“We combine insights from economics, finance, psychology & other behavioral sciences with an understanding of the ground realities”

